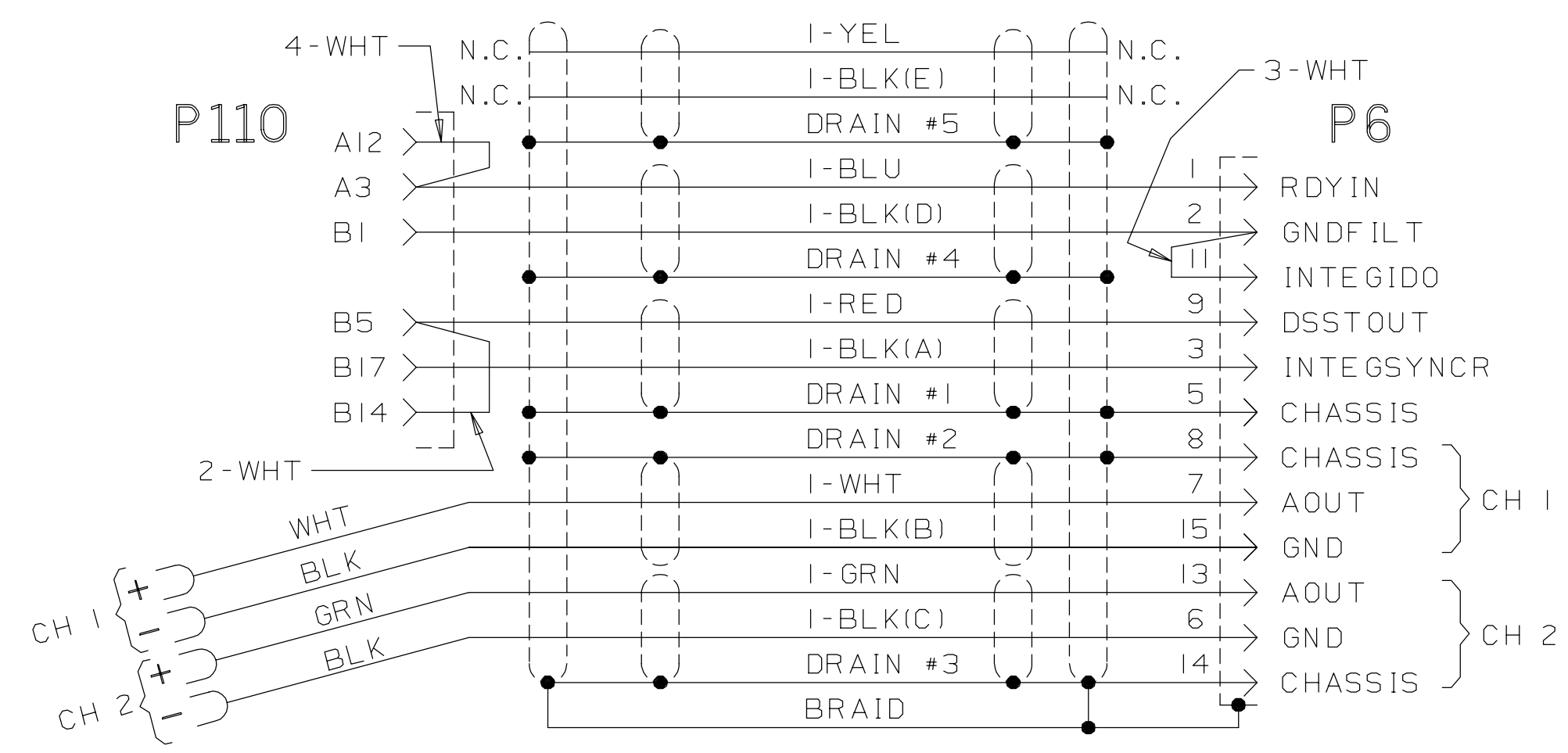
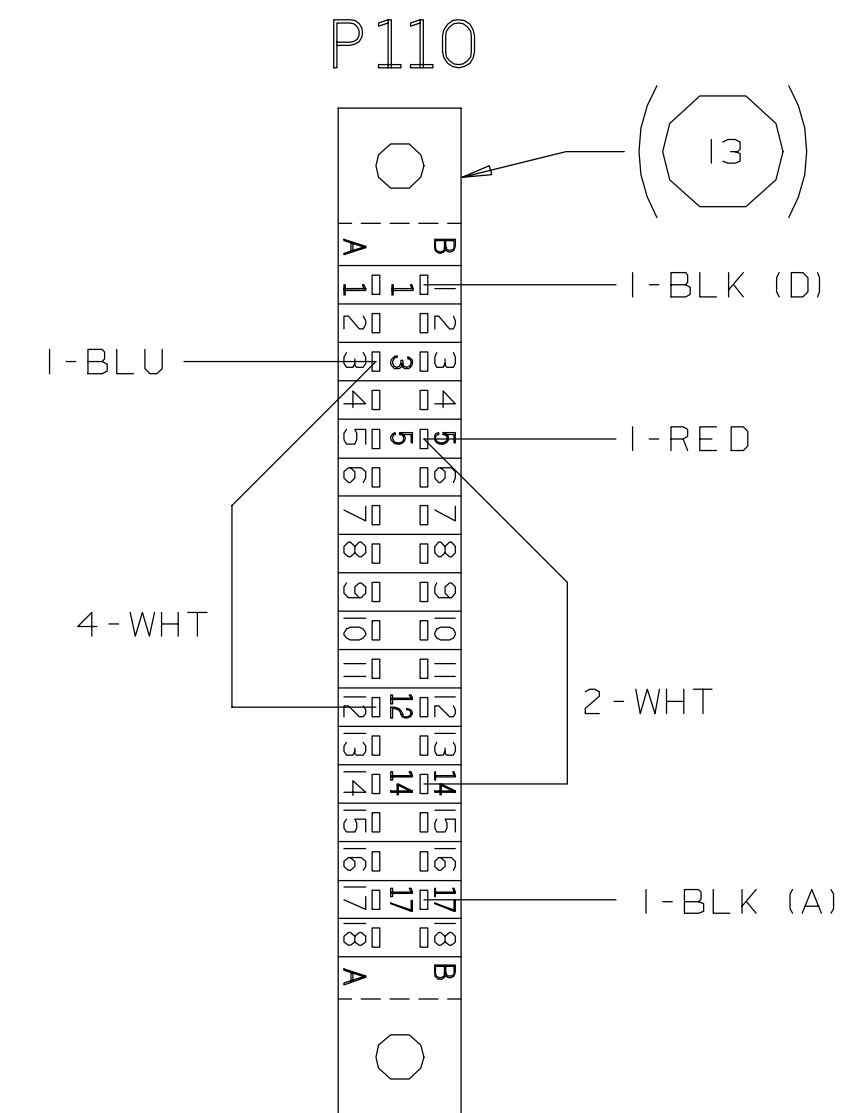


11	10	9	8	7	5	4	2	1
DASH NO	TYPE OR MODEL	NEXT ASSEMBLY				D 03-925303-00		
3800								

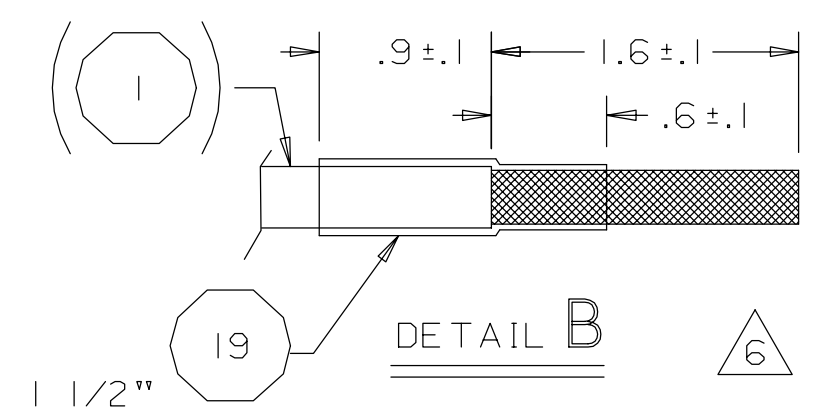


**SCHMATIC**

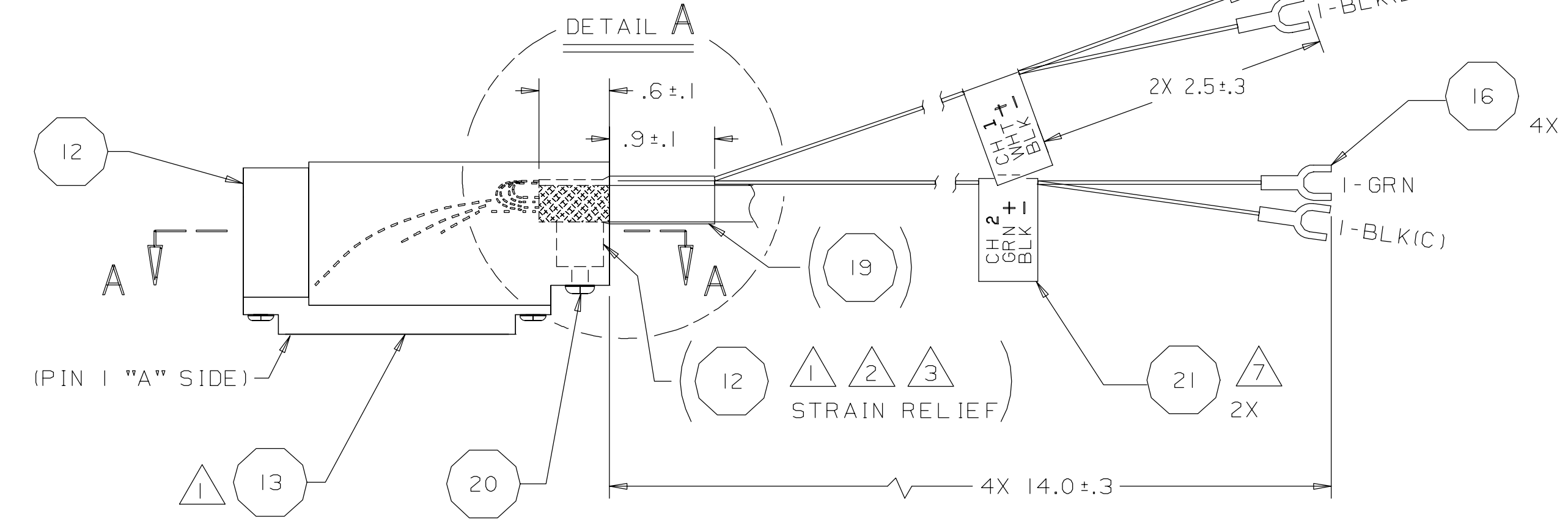
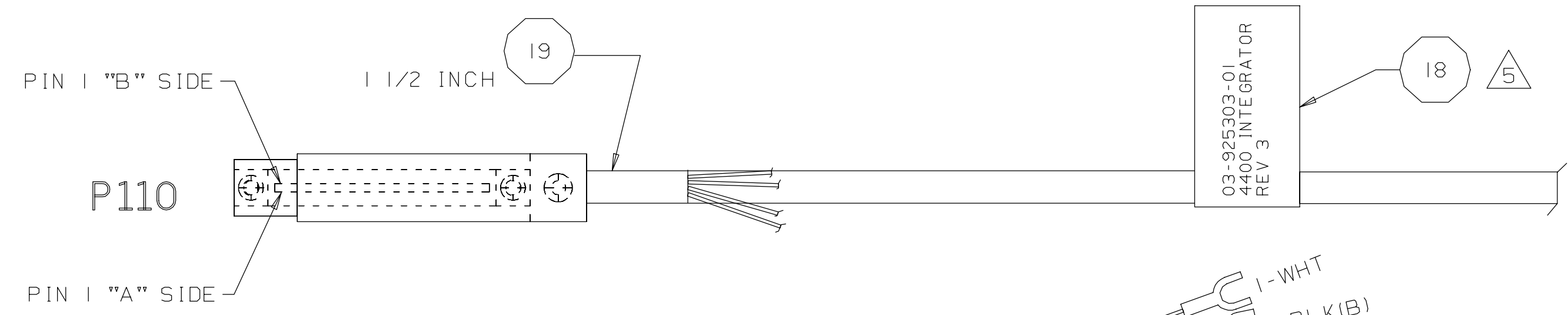
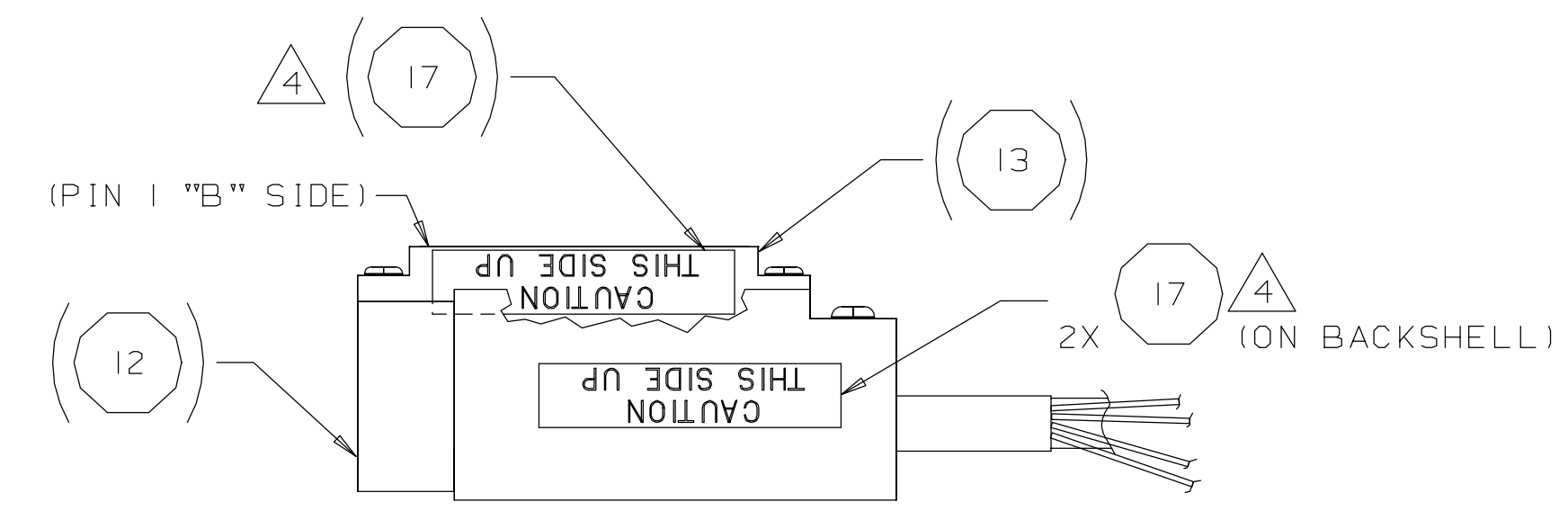


(SCALE: 2/1)

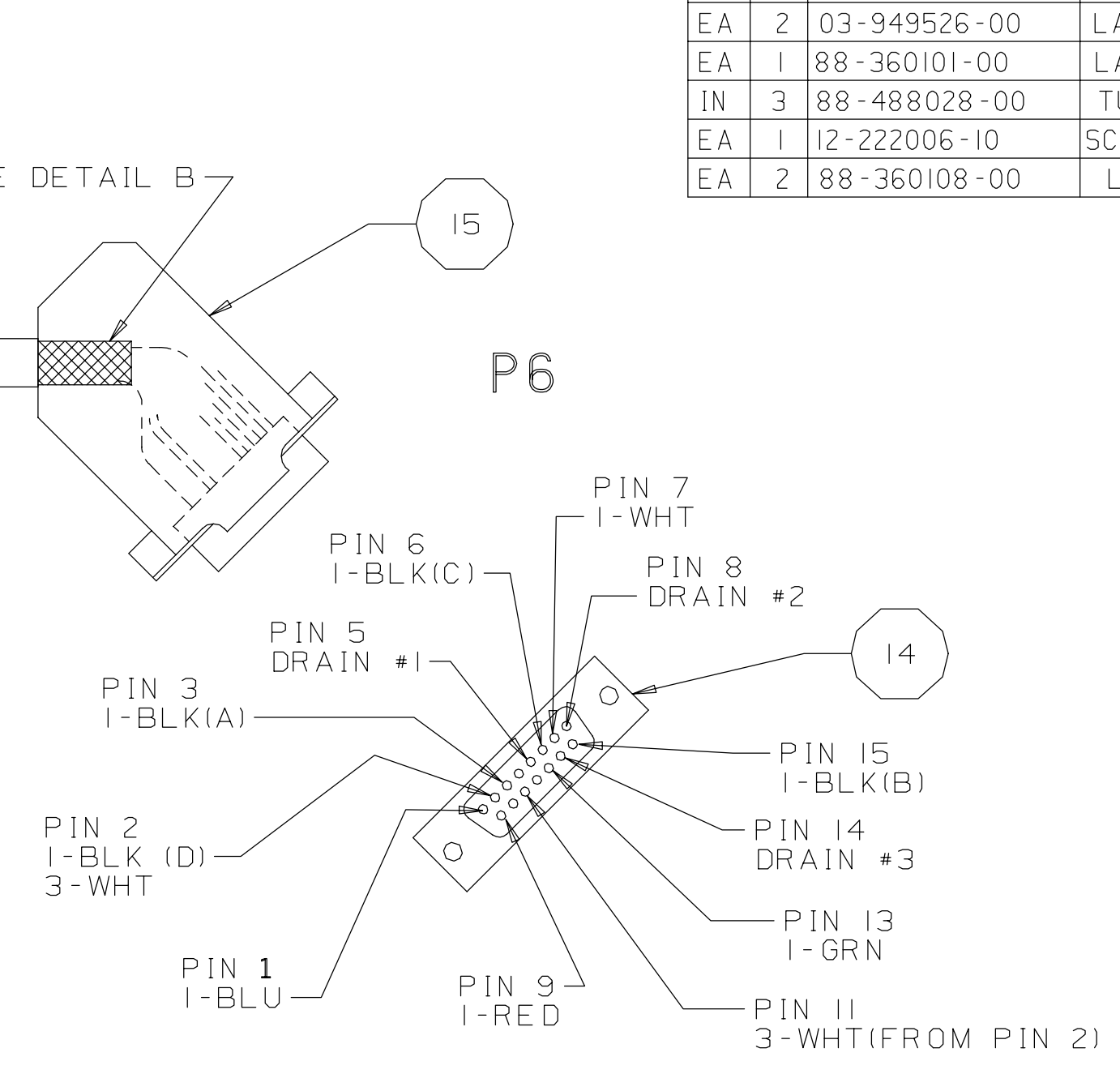
VIEW **A-A**



**DETAIL B**



**DETAIL A**



**P6**

ITEM	QTY	DESCRIPTION OR MATERIAL
1		CABLE, 5 SHLD PAIRS
2		WIRE, RED
3		WIRE, BLK(A)
4		DRAIN #1
5		WIRE, WHT
6		WIRE, BLK(B)
7		DRAIN #2
8		WIRE, GRN
9		WIRE, BLK(C)
10		DRAIN #3
11		WIRE, BLU
12		DRAIN #4
13		WIRE, YEL
14		WIRE, BLK(E)
15		DRAIN #5
16		SHIELD
17		HOOD, CONN, VARIABLE LENGTH
18		CONN, PCB, DUAL 18 CKT
19		CONN, D-SUB MIN, 15 PIN
20		SHELL, JUNCTION, 15 PIN, 45°
21		TERM, SPADE, 20-26AWG, #8
22		LABEL, "CAUTION THIS SIDE UP"
23		LABEL, WHT, 3 1/2" X 15/16"
24		LABEL, WHT, 1/2" X 15/16"
25		TUBING, SHRINK, Ø.50", BLK
26		SCREW, 6-32 X 5/8", PHMS, SST
27		LABEL, WHT, 1/2" X 1 3/4"

- 1. REMOVE CABLE JACKET AND BRAID 15 INCHES FROM END. REMOVE AN ADDITIONAL 1 INCH OF OUTER CABLE JACKET EXPOSING BRAID SHIELD. REMOVE FOIL AND CUT DRAIN WIRE FROM WHT/BLK AND GRN/BLK PAIRS, FOLDING PAIRS BACK ALONG CABLE JACKET. PLACE HEAT SHRINK TUBING, ITEM (19), OVER FOLDED PAIRS AND CABLE. CUT YEL/BLK PAIR FLUSH WITH HEAT SHRINK TUBING. CUT AND SOLDER PAIRS TO CONNECTOR PER VIEW A-A AND SCHEMATIC. SEE DETAIL "A". CUT UNUSED DRAIN WIRES FLUSH WITH HEAT SHRINK TUBING.
- 2. INSTALL STRAIN RELIEF (PART OF ITEM (12)) ONTO BACKSHELL (ITEM (12)) INSERT CABLE (ITEM (1)) THRU BACKSHELL. SOLDER WIRES TO CONNECTOR (ITEM (13)) PER VIEW "A-A" AND NOTE 1.
- 3. STRAIN RELIEF SUPPLIED WITH HOOD (ITEM (12)). (DISCARD SCREW SUPPLIED WITH HOOD).
- 4. APPLY LABELS (ITEM (17)) TO "B" SIDE OF CONNECTOR, (ITEM (12)) AND THE "B" SIDE OF THE HOOD BACKSHELL.

- 5. MARK BOTH SIDES OF LABEL (ITEM (18)) WITH PART NUMBER, NAME AND REVISION LEVEL OF ASSY, THEN LOCATE MIDWAY ON THE CABLE.
- 6. ON "P6" END REMOVE JACKET 1.6 INCHES FROM END. PLACE HEAT SHRINK TUBING, ITEM (19), OVER CABLE COVERING 0.6 INCHES OF EXPOSED BRAID. FOLD BRAID BACK OVER HEAT SHRINK TUBING. TRIM BRAID TO COVER 0.6 INCHERS OF HEAT SHRINK TUBING. SOLDER WIRES PER VIEW AND SCHEMATIC. INSTALL CONNECTOR HOOD, ITEM (15), WITHOUT COMPRESSION INSERT, SEE DETAIL "B".
- 7. MARK BOTH SIDES OF LABEL (ITEM (21)) WITH GRAPHICS SHOWN, LOCATE AS SHOWN.

DESCRIPTION OF CHANGE	REVISED CABLE ADDING SHIELDS AND SPADE TERMINALS & NOTES ADDED TO JUMPER & STATUS (READY LINES. ITEM 1 WAS 81-815100-00)
APVD	
EO	20116 20347
DFT	JCK JCK
CHK	DD
DATE	18 APR 97 2 JUN 97
REV	2 3

-01	ASSY			
-00	DRAWING ONLY			
DASH NO.	DESCRIPTION			
DRAWN	DATE	APPROVED	DATE	CODE
JCK	8 APR 96	D ROBELLO	4/12/96	
CHECKED	DATE	APPROVED	DATE	CLASS
JS	4/11/96	ROBELLO	4-12-96	
ASSY, CABLE, 4400 INTEGRATOR				
NOT OTHERWISE SPEC: ANG±				
FIN. ✓ DEC .X ± .XX ± .XXX ±				
I/1	38	I OF I	D	03-925303-00 3
SCALE	DIV	SHEET	SIZE	DRAWING NO
				REV